

Barrier FS

SDS Number: 299

Revision Date: 5/23/2015

Page 1 of 7

1 PRODUCT AND COMPANY IDENTIFICATION

Manufacturer

FS Specialties
1852 W. 11th St.
Ste. 133
Tracy, CA 95376

Contact: FS Specialties
Phone: 888.880.6439

Product Name: Barrier FS
Revision Date: 5/23/2015
Version: 1
SDS Number: 299
Common Name: Cleaner
CAS Number: MIXTURE
Product Code: SI-FCC
Chemical Family: Industrial Cleaning Compound
Emergency Phone: 805.440.0336

2 HAZARDS IDENTIFICATION

NFPA:
HMIS III:

Health = 1, Fire = 0, Reactivity = 0
H1/F0/PH0



HMIS III	
HEALTH	1
FLAMMABILITY	0
PHYSICAL HAZARDS	0
PERSONAL PROTECTION B Safety Glasses, Gloves	

PERSONAL PROTECTION INDEX			
A		G	
B		H	
C		I	
D		J	
E		K	
F		X	Consult your supervisor or S.O.P. for "SPECIAL" handling directions
A	n	o	p
q	r	s	t
u	w	y	z
<small> A Safety Glasses n Nitrile Gloves o Pure PPE/1 & 2 p Goggles q Boots r Synthetic Fibers s Fall t Just Respirator u Vapor Respirator w Suit & Vapor Respirator y Full Face Respirator z Nitrite Block (see 1) Additional Information </small>			

GHS Signal Word:
WARNING

GHS Classifications:
Health, Skin corrosion/irritation, 3
Health, Serious Eye Damage/Eye Irritation, 2 B

GHS Phrases:
H316 - Causes mild skin irritation
H320 - Causes eye irritation

GHS Precautionary Statements:

Barrier FS

SDS Number: 299

Revision Date: 5/23/2015

Page 2 of 7

P264 - Wash skin thoroughly after handling.
P302+352 - IF ON SKIN: Wash with soap and water.
P305+351+338 - IF IN EYES: Rinse continuously with water for several minutes. Remove contact lenses if present and easy to do. Continue rinsing.
P332+313 - If skin irritation occurs: Get medical advice/attention.
P337+313 - If eye irritation persists: Get medical advice/attention.
P501 - Dispose of contents/container to an approved waste disposal plant.

3

COMPOSITION/INFORMATION ON INGREDIENTS

Ingredients:

Cas #	Percentage	Chemical Name
N/A	>98%	Proprietary, non-hazardous, non-regulated
68439-46-3	<2%	Alcohols, C9-11, ethoxylated

4

FIRST AID MEASURES

Inhalation: Give oxygen or artificial respiration if needed. If symptoms develop, move victim to fresh air. If symptoms persist, obtain medical attention.

Skin Contact: Promptly flush skin with water for at least 15 minutes to ensure all chemical is removed. Remove contaminated clothing and wash before reuse. If reddening develops and/or persists, obtain medical attention.

Eye Contact: Flush with large amounts of water for at least 15 minutes, lifting upper and lower lids occasionally. Remove contact lenses if present and easy to do so. If eye irritation persists, obtain medical attention.

Ingestion: Rinse mouth with water. Do NOT induce vomiting unless instructed to do so. Give 3-4 glasses of water or milk to dilute stomach contents. Never give anything by mouth to an unconscious person. If symptoms develop and/or persist, obtain medical attention.

Most important symptoms and effects, both acute and delayed:

The most important known symptoms and effects are described in the labelling (see Section 2) and/or Section 11.

Indication of any immediate medical attention and special treatment needed:

No data available.

5

FIRE FIGHTING MEASURES

Flammability: Not flammable
Flash Point: > 93.3 °C (200 °F)
Flash Point Method: (PCC)
Burning Rate: No data available
Autoignition Temp: Not determined
LEL: DNA
UEL: DNA

Extinguishing Media:

Water Spray
Carbon Dioxide

Barrier FS

SDS Number: 299

Revision Date: 5/23/2015

Page 3 of 7

Alcohol-Resistant Foam
Dry Chemical

Special Hazards Arising From the Substance or Mixture:

Aldehydes
Carbon Oxides
Hydrochloric Acid gas
Magnesium Oxides
Nitrogen Oxides (NOx)
Silicon Oxides
Sodium Oxides

Advice for Firefighters:

Firefighters should wear full-face, positive-pressure respirators.

Further Information:

If incinerated, may release toxic fumes.
Use water spray to cool unopened containers.
See Section 7 for more information on safe handling.
See Section 8 for more information on personal protection equipment.
See Section 13 for disposal information.

6

ACCIDENTAL RELEASE MEASURES**Personal Precautions, Protective Equipment and Emergency Procedures:**

Use personal protective equipment as required.
Keep from contacting skin or eyes.
Avoid breathing vapors, mist, dusts or gas.
Ensure adequate ventilation.
Evacuate personnel to safe areas.

Environmental Precautions:

Prevent further release (leakage/spillage) if safe to do so.

Methods and Materials for Containments and Cleaning Up:

Absorb with liquid-binding material (sand, diatomite, universal binders).
Place contaminated material into suitable, closed containers for disposal.
Dispose of contaminated material according to Section 13.
After spillage has been collected, area may be flushed with water or wet-brushed.
Ensure adequate ventilation.

Reference to Other Sections:

See Section 7 for information on safe handling.
See Section 8 for information on personal protection equipment.
See Section 13 for information on proper disposal.

Barrier FS

SDS Number: 299

Revision Date: 5/23/2015

Page 4 of 7

7 HANDLING AND STORAGE

- Handling Precautions:** Avoid breathing vapors, mist or dusts.
Avoid contact with eyes, skin, or clothing.
Keep containers closed when not in use.
Do not expose containers to open flame, excessive heat, or direct sunlight.
Do not puncture or drop containers.
Handle with care and avoid spillage on the floor.
Keep material out of reach of children.
Keep material away from incompatible materials.
Wash thoroughly after handling.
Ensure adequate ventilation.
- Storage Requirements:** Keep container tightly closed.
Do not store in direct sunlight.
Store away from strong acids, strong bases, strong oxidizing agents, anionic surfactants, Alkali metals, Alkaline Earth metals, Copper alloys, Alcohols and Amines.

8 EXPOSURE CONTROLS/PERSONAL PROTECTION

- Engineering Controls:** All ventilation should be designed in accordance with OSHA standard (29 CFR 1910.94). Use local exhaust at filling zones and where leakage and dust formation is probable. Use mechanical (general) ventilation for storage areas. Use appropriate ventilation as required to keep Exposure Limits in Air below TLV & PEL limits.
- Personal Protective Equip:** Eye/face protection:
When using material use safety glasses and gloves according to HMIS PP, B. All safety equipment should be tested and approved under appropriate government standards such as NIOSH (US) or EN 166 (EU).
- Skin protection:
Handle with gloves made from Neoprene, Nitrile or Buna rubber. Gloves must be inspected prior to use. Use proper glove removal technique (without touching glove's outer surface) to avoid skin contact. Dispose of contaminated gloves according to applicable laws and laboratory practices.
- Body Protection:
Chemically resistant gloves and safety glasses are recommended. Type of protective equipment should be selected based on concentration amount and conditions of use of this material.
- Respiratory protection:
Full-face dust/vapor respirator may be required as backup to engineering controls when proper engineering controls are not in place to keep TLV and PEL limits below defined thresholds. Respiratory protection must comply with 29 CFR 1910.134.
- Control of environmental exposure:
Prevent leakage or spillage if safe to do so. Do not let material enter drains.

Components with workplace control parameters:

Contains no substances with occupational exposure limit values.

Biological occupational exposure limits:

Barrier FS

SDS Number: 299

Revision Date: 5/23/2015

Page 5 of 7

Contains no substances with biological occupational exposure limits values.

9 PHYSICAL AND CHEMICAL PROPERTIES

Appearance:	Goupy, bright pink liquid	Odor:	Mild
Physical State:	Liquid	Molecular Formula:	MIXTURE
Odor Threshold:	Not determined	Solubility:	100%
Particle Size:	Not determined	Softening Point:	Not determined
Spec Grav./Density:	1.498 g/ml (12.5 lbs/gal)	Percent Volatile:	DNA
Viscosity:	Not determined	Heat Value:	Not determined
Sat. Vap. Conc.:	Not determined	Freezing/Melting Pt.:	Not determined
Boiling Point:	Not determined	Flash Point:	> 93.3 °C (200 °F)
Flammability:	(solid, gas): Not flammable	Octanol:	Not determined
Partition Coefficient:	Not determined	Vapor Density:	(air = 1): Not determined
Vapor Pressure:	(mm Hg @ 20 °C): 0.12	VOC:	DNA
pH:	@ 100%: 8.0 - 10.0	Bulk Density:	Not determined
Evap. Rate:	Not determined	Auto-Ignition Temp:	Not determined
Molecular weight:	MIXTURE	UFL/LFL:	Not determined
Decomp Temp:	Not determined		

10 STABILITY AND REACTIVITY

Stability:	Product is stable under normal conditions.
Conditions to Avoid:	Incompatibilities, flames, ignition sources.
Materials to Avoid:	Strong acids, strong bases, strong oxidizing agents, anionic surfactants, Alkali metals, Alkaline Earth metals, Copper alloys, Alcohols and Amines.
Hazardous Decomposition:	Aldehydes, Carbon Oxides, Hydrochloric Acid gas, Magnesium Oxides, Nitrogen Oxides (NOx), Silicon Oxides and Sodium Oxides.
Hazardous Polymerization:	Will not occur.

11 TOXICOLOGICAL INFORMATION

Component(s): Alcohols, C9-11, ethoxylated
CAS No(s): 68439-46-3

Acute Toxicity:
LD50 Oral - Rat: 1,378 mg/kg
LD50 Dermal - Rabbit: > 5,000 mg/kg

Skin Corrosion/Irritation: Moderate eye irritation.

Serious Eye Damage/Eye Irritation: Mild skin irritation.

Respiratory or Skin Sensitation: No data available.

Germ Cell Mutagenicity: No data available.

Carcinogenicity:

IARC: No component of this product present at levels greater than or equal to 0.1% is identified as a carcinogen or

Barrier FS

SDS Number: 299

Revision Date: 5/23/2015

Page 6 of 7

potential carcinogen by IARC.

ACGIH: No component of this product present at levels greater than or equal to 0.1% is identified as a carcinogen or potential carcinogen by ACGIH.

NTP: No component of this product present at levels greater than or equal to 0.1% is identified as a carcinogen or potential carcinogen by NTP.

OSHA: No component of this product present at levels greater than or equal to 0.1% is identified as a carcinogen or potential carcinogen by OSHA.

Reproductive Toxicity: No data available.

Specific Target Organ Toxicity - Single Exposure: No data available.

Specific Target Organ Toxicity - Repeated Exposure: No data available.

Aspiration Hazard: No data available.

Additional Information:

Component: Alcohols, C9-11, ethoxylated; RTECS: AZ8100000

12

ECOLOGICAL INFORMATION

Component(s): Alcohols, C9-11, ethoxylated

CAS No(s): 68439-46-3

Toxicity:*Toxicity to fish:*

LC50 - Pimephales promelas (Fathead Minnow): 8.5 mg/l (96 h)

LC50 - Oncorhynchus mykiss (Rainbow Trout): 6 mg/l (96 h)

Toxicity to bacteria:

EC50 - Daphnia magna (Water Flea): 2.5 mg/l (48 h)

Persistence and Degradability:

No data available.

Bioaccumulative potential:

No data available.

Mobility in Soil:

No data available.

Results of PBT and vPvB assessment:

Not required/conducted.

Other Adverse Effects:

An environmental hazard cannot be excluded in the event of unprofessional handling or disposal. Very toxic to aquatic life.

Barrier FS

SDS Number: 299

Revision Date: 5/23/2015

Page 7 of 7

13 DISPOSAL CONSIDERATIONS

Product: Hazardous wastes shall be managed responsibly. All entities that store, transport or handle hazardous waste shall take the necessary measures to prevent risks of pollution, release into the environment or damage to people and animals. Contact a licensed professional waste disposal service to dispose of this material.

Contaminated Packaging: Dispose of as unused product.

14 TRANSPORT INFORMATION**DOT (US)**

Non-regulated material, liquid

IMDG

Non-regulated material, liquid

IATA

Non-regulated material, liquid

15 REGULATORY INFORMATION

COMPONENT / (CAS/PERC) / CODES

*Alcohols, C9-11, ethoxylated (68439463 <2%) MASS, NJHS, PA, SARA311/312, TSCA

REGULATORY KEY DESCRIPTIONS

MASS = MA Massachusetts Hazardous Substances List
NJHS = NJ Right-to-Know Hazardous Substances
PA = PA Right-To-Know List of Hazardous Substances
SARA311/312 = SARA 311/312 Toxic Chemicals
TSCA = Toxic Substances Control Act

16 OTHER INFORMATION**Disclaimer:**

The data in this Safety Data Sheet relates only to the specific material designated herein and does not relate to use in combination with any other material in any process. The information set forth herein is furnished free of charge and is based on technical data that FS Specialties believes to be reliable. It is intended for use by persons having technical skill and at their own discretion and risk. Since conditions of use are outside of FS Specialties' control, FS Specialties makes no warranties, expressed or implied, and assumes no liability in connection with any use of this information. Nothing herein is to be taken as a license to operate under, or a recommendation to infringe upon, any patents.

Preparation Information:

GHS Conversion Services
www.ghsconversionservices.com
(669) 236-0304

BarrierFS

FS Specialties, LLC
PO BOX 1628
Tracy, CA 95378
(888) 880-6439
Patent Pending

Barrier FS is a quat based cleaner used to temporarily fill cracks, holes and other possible voids in floors and drains that exist in food processing or cold storage facilities. The application of **Barrier FS** paste to these areas limits water and product debris from accumulating during production. Identifying the presence or non-presence of this florescent visual aide will help define the frequency needed for treatment and reapplication of **Barrier FS**. Applying **Barrier FS** when the least amount of water activity is present, will allow the paste to slightly harden allowing for a longer adherence to the crack, hole or void.



Directions for Use: **Barrier FS** should be spread into the cracks, holes and voids with tools dedicated for each specific surface type (i.e. Floors, walls, drains or structure). Apply in a uniform fashion, filling the cracks, holes or voids with the “pink paste”.

Re-applying the paste is advised if the hole, crack or void no longer shows visible pink residual paste in the space.

Technical Information:

Appearance : **Bright Pink Paste**

pH: **8-10**

Odor : **None**

NFPA Hazard Ratings :

Health : **1** Fire : **1** Reactivity : **0**

WARNING

WARNING

Barrier FS

Hazard Statements

- Causes eye irritation
- Causes mild skin irritation

No GHS Pictograms

Precautionary Statements

Wash skin thoroughly after handling.

2 - IF ON SKIN: Wash with soap and water.

1+338 - IF IN EYES: Rinse continuously with water for several minutes. Remove contact lenses if present and able to do. Continue rinsing.

3 - If skin irritation occurs: Get medical advice/attention.

3 - If eye irritation persists: Get medical advice/attention.

Dispose of contents/container to an approved waste disposal plant.

FS Specialties
1852 W. 11th St., Tracy, CA 95376 Tel.888.880.6439

BarrierFS

USAGE

CONSULT MATERIAL SAFETY DATA SHEET BEFORE USING PRODUCT. USE PER INSTRUCTIONS ON TECHNICAL DATA SHEET.

Notes:

CAUTION MATERIAL CAN BE SLIPPERY ON WET & HARD SURFACES.

NON-REGULATED MATERIAL, LIQUID

FIRST AID

Eyes:

Immediately flush eyes with large amounts of water for at least 15-20 minutes. Lift upper and lower lids and rinse well under them. Get immediate medical attention.

Skin:

Immediately rinse excess material off skin with large amounts of water. CONSULT A PHYSICIAN IF IRRITATION PERSISTS. WASH CLOTHING BEFORE REUSE!

Ingestion:

IF SWALLOWED CALL A PHYSICIAN IMMEDIATELY. NEVER GIVE ANYTHING BY MOUTH TO AN UNCONSCIOUS PERSON.

Inhalation:

If inhaled, remove to fresh air. If no breathing, give artificial respiration. If breathing is difficult, give oxygen. CALL A PHYSICIAN IMMEDIATELY!!!

NET CONTENT 50 LBS

In case of emergency contact: (805-440-0336)

FS SPECIALTIES
P.O. BOX 1628, TRACY, CA 95378
805.440.0336 or 888-880-6439

STORAGE AND HANDLING

Store in a cool, dry, well ventilated place away from heat, cold, sources of ignition, strong oxidizing agents, and acids.

Notes:

Avoid contact with eyes, skin, and clothing. Use with adequate ventilation. Wash thoroughly after handling. Dye can stain skin pink if allowed to dry.

HMIS RATING:

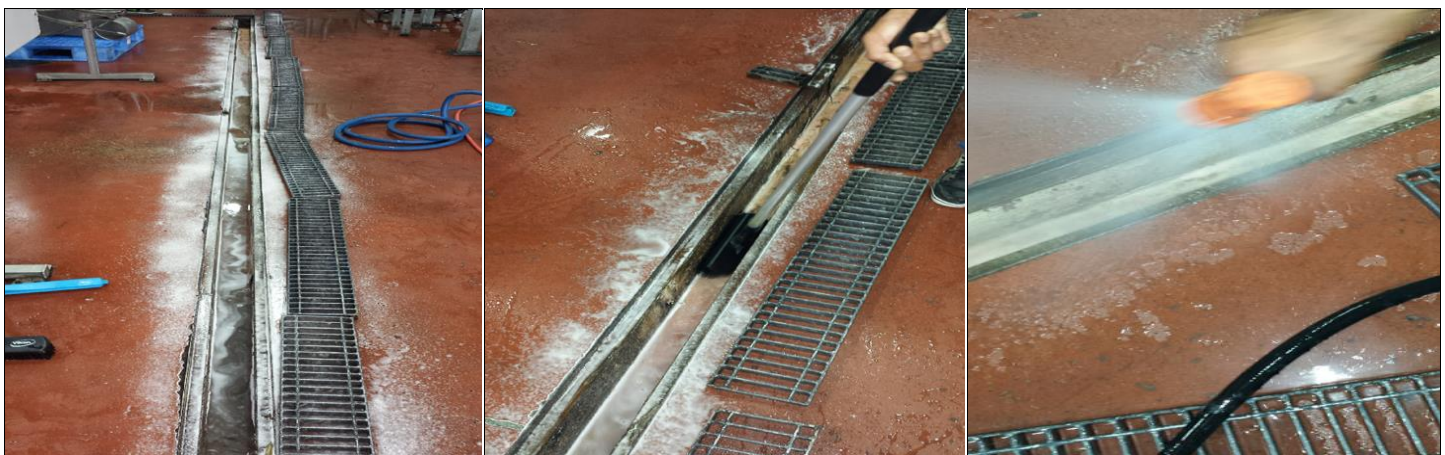
Health: 1
Flammability: 0
Reactivity: 0
Protection: B

Facility:	Barrier FS
Title:	Weekly Application of Barrier FS Cleaning Treatment
SSOP#:	Draft
Implementation Date:	09/15/14
Reviewed Date:	09/15/14

Scope: Weekly Application of the Barrier FS treatment to drains and cracked floors

Purpose: To provide extra cleaning support during idle plant time and to allow less product or water to accumulate in some damaged floor areas while providing a visual color indicator to assure task was completed.

Primary Points of Interest



Remove drains and rinse any product to drain openings. Foam all surfaces with chlorinated alkaline foam.	Scrub the drains with a designated black drain brush. Always follow the designated SSOP for drain and floor sanitation.	Rinse the drain with the low pressure "wide-spray pattern" nozzle to prevent over spray of debris from the drains.
--	---	--



Sanitize with 400-800 ppm's of the quat sanitizer, allow excess water to dry or drain, then apply the Barrier FS paste directly.	Barrier FS paste is applied weekly to the walls of the drains as a cleaning treatment. Paste is spread in a thin layer on drain walls.	The Barrier FS paste can be applied to the drain cover ledge to reduce product accumulation at start-up of the line.
--	--	--

Line/Equipment Description: Drains and damaged floor areas

Assigned Person(s): Sanitation employees apply the paste, QA staff should check drains and damaged floors for presence of the paste at the start of each production week.

Personal Protection Equipment: Gloves and Safety Glasses

Daily Sanitation and Equipment Conditioning: Follows standard Drain Cleaning SSOP

Weekly Sanitation and Equipment Conditioning: At the completion of the last sanitation shift prior to the line sitting idle the Barrier FS is applied as a final step.

Master Sanitation: Barrier FS can be applied to drains and damaged floors more frequently than weekly if needed to support Master Sanitation.

Verification: Barrier FS has a bright Pink color when first applied and will slowly fade as water and production come into contact with the paste.

Chemistry:

Barrier FS: A quat based filler used to treat tough to clean concrete areas and damaged or worn flooring. Barrier should be applied to fill the void of the damage or as a thin film just thick enough to see the pink coloring.

Author		Date:
Approving Manager		Date:

Revision Notes:

Version	Version Notes	Revision Date

Barrier FS Sanitation Treatment – One Point Lesson

Scope: Continuous treatment of drains, floors and other non-food contact surfaces.

Purpose: Barrier FS is used to reduce water, product or production debris from accumulating in areas during production where water and full cleaning is not possible.

Primary Points of Interest:



Rinse drain free of product or wash drain prior to applying Barrier FS. Remove the drain cover and use a designated glove to apply a small amount of paste to drain surfaces.



The application of paste by hand allows for the treatment paste to be forced into small spaces, under drain ledges and around drain openings reducing product and water accumulation.



The drain screens should be lightly scrubbed with the paste so that a small amount of paste is visual. This will help identify how much water has passed over the screen between cleanings.



The bottom side of the drain grate should have a thin layer of paste applied to it. This will reduce the amount of product or possible build up from occurring on the underside of the grate.



Barrier FS can also be applied to areas where product or water can easily accumulate. Apply while surfaces is relatively dry and monitor the rate at which it dissolves to determine repeat applications.



Barrier FS is a quat based cleaning compound that will physically reduce the accumulation of product, water and other processing debris in drain and floor voids. The bright color allows easy identification and ease in monitoring for determining reapplication frequency.

Personal Protection Equipment: Disposable or designated Gloves, Eye Protection

Chemical: Follow existing floor and Drain SSOP's, for best results apply Barrier FS to areas with light or inconsistent water flow. Recommended use is approx. ½ to 1 hand full per 1-4 square feet. Use a floor squeegee or designated hand trowel to force paste into cracks, holes or voids.